

## Top Stories This Week

- ICICI Bank completes sale of 9 percent stake in ICICI Lombard to Fairfax Financial Holdings
- Godrej Consumer Products acquires Strength Of Nature, a leading hair care company, to boost growth in Africa
- Tata Steel registers 8.34 percent sales growth in 2015-16: PTI
- IOC pulls off record crude processing at 56 million tonnes in FY16: PTI
- Strides Shasun (PTI) Acquires 3 brands of Sweden's Moberg Pharma. Total consideration at \$10 million
- NTPC approves Investment In 2 Solar Projs With An Estimated Cost Of ` 3,104 Cr
- IFCI made partial disinvestment of 150000 shares of National Stock Exchange of India Ltd for ` 3950/- per share
- Gallantt Ispat approves Proposal To Invest `511 Cr To Expand Capacity Of Various Plants
- JMC Projects: Gets Second Prov Certificate To Start Ops At UP-MP Border Road Project
- Axis Bank Confirms Taking Over Jaypee's Headquarters In Noida against `700 Cr Jaypee Infra's Debt.
- Kotak Mahindra Bank Says Arm Buys 6.8% Stake In Diamond Power Infrastructure.

## Weekly Indices Change

Index	Close	Prev Close	Chg. (%)
SENSEX	24673	25269	-2.36
NIFTY	7555	7713	-2.05
MIDCAP	10594	10642	-0.45
SMLCAP	10664	10639	0.23
METAL	7467	7489	-0.29
OIL&GAS	9099	9047	0.57
AUTO	17463	17883	-2.35
TECK	5923	6029	-1.76
BANKEK	17695	18444	-4.06
IT	11064	11272	-1.85
FMCG	7603	7770	-2.15
HC	15217	15110	0.71
PSU	6028	6100	-1.18
CD	11348	11560	-1.83
POWER	1800	1789	0.61
CG	12794	13020	-1.74
REALTY	1243	1264	-1.66

## Global Indices

DOW	17576	17792	-1.21
NASDAQ	4850	4914	-1.30
FTSE	6204	6146	0.94
NIKKEI	15821	16164	-2.12
HANGSENG	20370	20499	-0.63

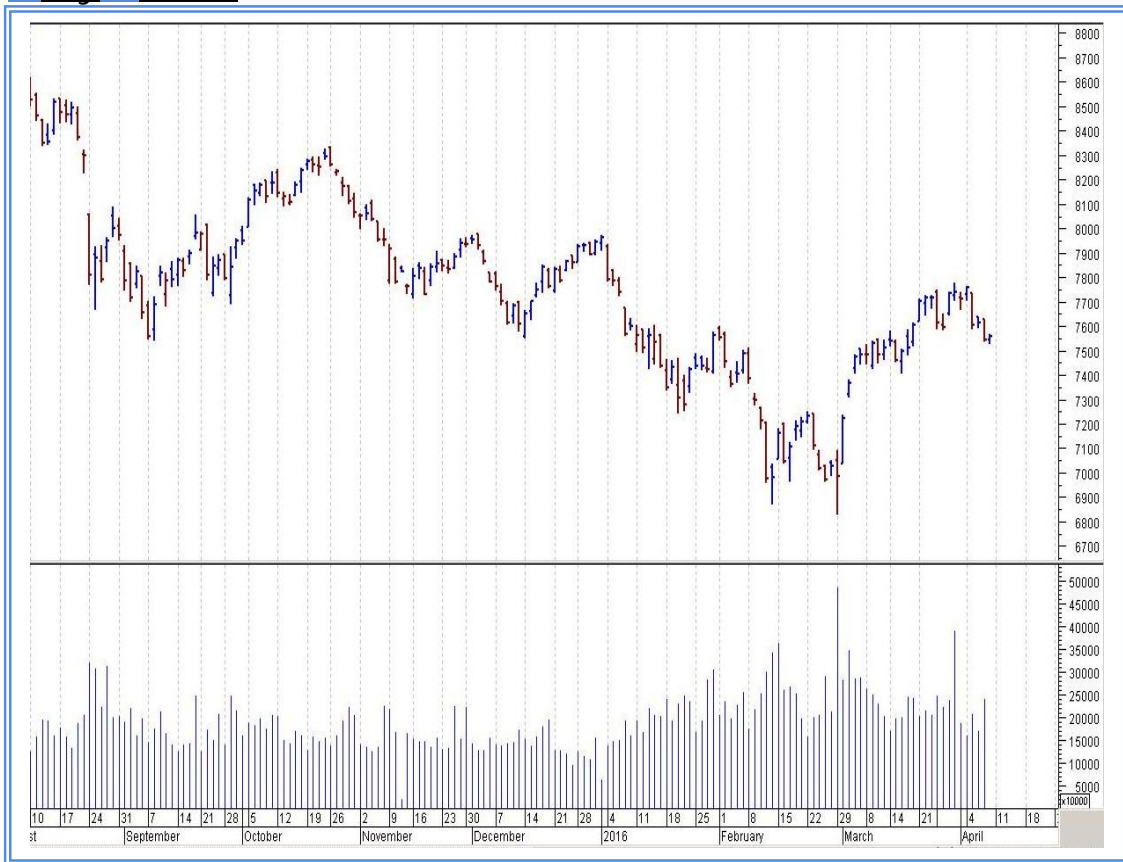
## Top Gainers Weekly

Scrip	Price	% Chg
Sagar Cements	526.40	35.44
Kakatiya Cement	263.55	32.77
Relaxo Footwears	472.15	28.69
NCL Industries	117.15	24.23
Liberty Shoes	174.40	22.26

## Top Losers Weekly

Scrip	Price	% Chg
Hind. Composites	760.85	16.61
Ashoka Buildcon Ltd.	146.65	15.55
Ipca Laboratorie	501.20	14.91
BEML Ltd.	888.20	14.01
Bharat Forge	769.90	13.48

## Nifty Corner



Support & Resistance						
S3	S2	S1	Nifty	R1	R2	R3
7250	7350	7450	7555	7650	7750	7850
Moving Averages						
20DMA		50DMA		100DMA		200DMA
7385		7365		7605		7905

## Market Commentary

The market fell last week in tandem with global stocks as uncertainty regarding the quantum and timing of interest rate hikes in the United States spooked investors. Profit booking added fuel to the fire as Indian shares had risen ahead of the Reserve Bank of India's (RBI) monetary policy review on Tuesday, 5 April 2016. Shares corrected after RBI cut its benchmark lending rate by 25 basis points, in line with market expectations. The Sensex fell 2.36% in the week ended on Friday, 8 April 2016. The losses for the Sensex were higher in percentage terms than those for the Nifty 50 index. The Nifty fell 2.05%. The BSE Mid-Cap index fell 0.45%. The decline in this index was lower than the Sensex's decline in percentage terms. The BSE Small-Cap index rose 0.23%, outperforming the Sensex. For the next week Nifty likely to trade in the range between 7650 - 7750 in the upper side and 7450 - 7350 in the lower side.

Stocks at 52 wk High

Scrip	Cmp
Grasim	3982.55
Havells India	332.65
Heidelberg Cem	97.85
Ramco Cements	443.10
Ruchira Papers	69.45

Stocks at 52 wk Low

Scrip	Cmp
Hind Composites	760.85
Ipca Labs	501.20
J Kumar Infra	236.15
Religare Enterp	288.10
Vaibhav Global	312.95

FII Activity

Date	Figures in crore
04/04	236.82
05/04	-800.79
06/04	-493.56
07/04	-294.72
08/04	180.27
NET	-1171.98

DII Activity

Date	Figures in crore
04/04	-333.74
05/04	55.85
06/04	258.68
07/04	-16.06
08/04	-159.01
NET	-194.28

Weekly Stock Idea

Scrip	B/S	Cmp	Tgt
WSTCSTPAPR	B	81	95
SNOWMAN	B	60	65
GATI	B	117	135
COFFEEDAY	B	234	265
DBREALTY	B	48	55

Buy on dips & Sell on rise with Stop-loss of 3%

Volume Breakout Stocks

Scrip	Cmp
Nilkamal	1275.25
Birla Corp	393.90
Redington	115.00
Tata Metaliks	105.20
Atlas Cycles	195.85

Week Ahead

MAJOR RESULTS/AGM MEETING THIS WEEK:

11 APR: NRC

12 APR: BAJAJCORP, RIIL, GOACARBON

15 APR: BLUEDART, INFY, DCBBANK

**VISIT US AT: [WWW.INDIRATRADE.COM](http://WWW.INDIRATRADE.COM)**

**Disclaimer**

This report is for private circulation within the Indira Group. This report is strictly confidential and for information of the selected recipient only and may not be altered in any way, transmitted to, copied or distributed, in part or in whole, to any other person or to the media or reproduced in any form. This report should not be construed as an offer or solicitation to buy or sell any securities or any interest in securities. It does not constitute a personal recommendation or take into account the particular investment objectives, financial situations, or any such factor. The information, opinions estimates and forecasts contained here have been obtained from, or are based upon, sources we believe to be reliable, but no representation of warranty, express or implied, is made by us to their accuracy or completeness. Opinions expressed are our current opinions as of the date appearing on this material only and are subject to change without notice.